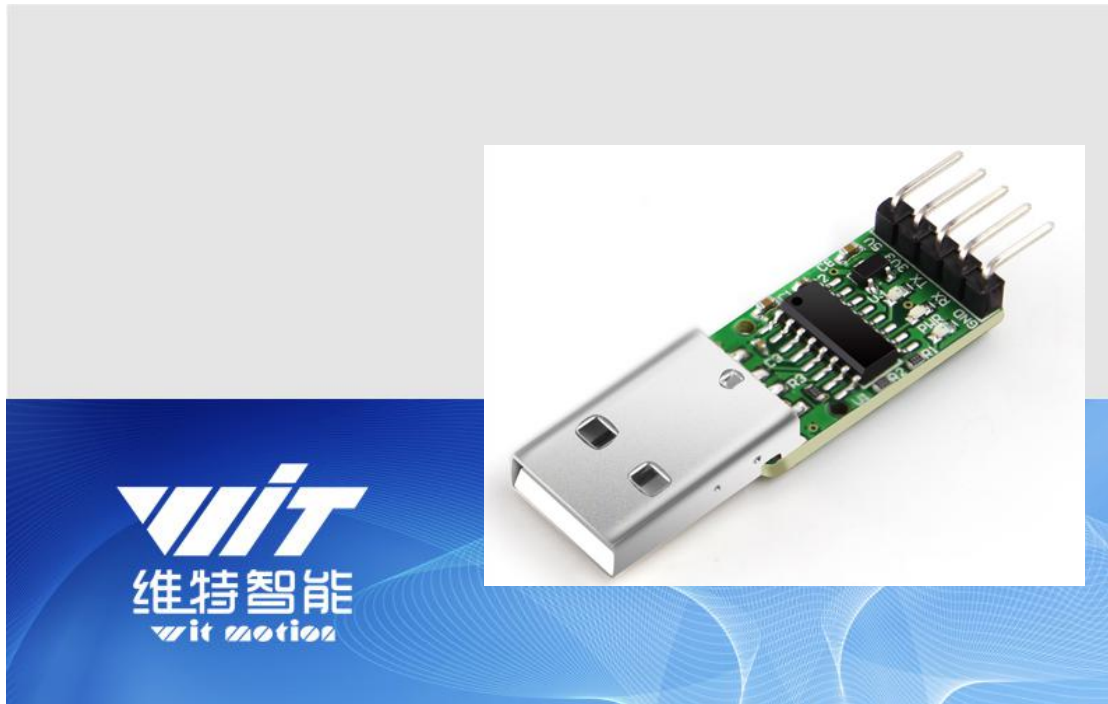


# USB-TTL SPECIFICATION



Model : USB-TTL

Description : USB-TTL Serial converter

Production Standard

Enterprise quality system standard: ISO9001:2016

Tilt switch production standard : GB/T191SJ 20873-2016

Criterion of detection : GB/T191SJ 20873-2016

Revision date : 2018.08.22

Version	Update content	Author	Date
V4.0	Release	Sharlene	20180822

# Catalog

1 Description.....	3
2 Pin Description.....	3
3 Method.....	4
3.1 Install driver.....	4
3.2 Check port number.....	5
4 Function test.....	7

# 1 Description

- (1) Compatible Windows Linux Wince operating system.
- (2) The indicator lights indicate the working status of the device in red, yellow and green. COM port selects USB (yellow light) is always on, data reception RX (red light) flashes, data transmission TX (green light) flashes.
- (3) Small size, high stability, easy to carry.
- (4) Compatible with 3.3V/5V voltage input and output, can supply power to the MCU.
- (5) Use CH340 driver chip for high speed transmission.

# 2 Pin Description



Name	Function
5V	Module power, 5V output
3V3	Module power, 3.3V output
RX	Serial data input, TTL level
TX	Serial data output, TTL level
GND	GND

Product size: 47mmX12mmX7mm

Pin spacing: 2.54mm.

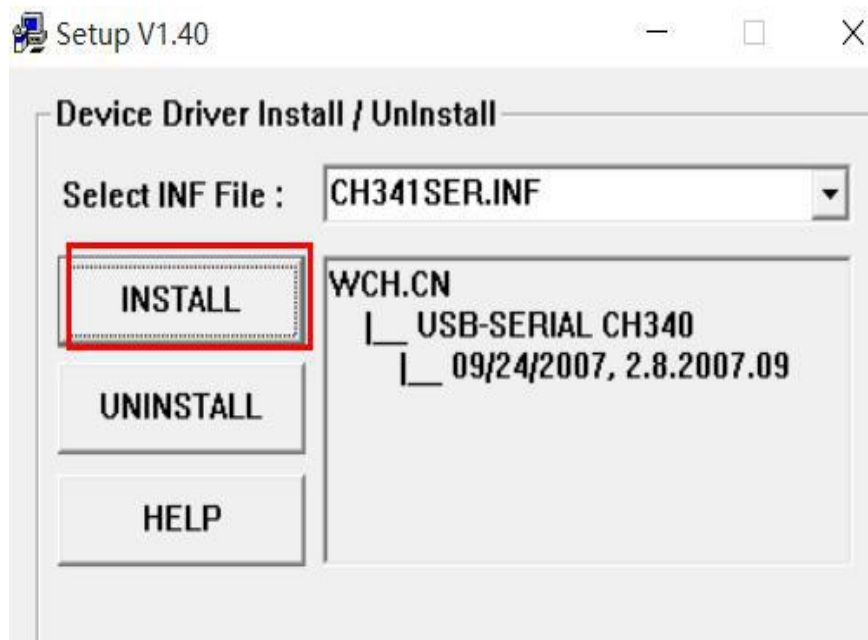
## 3 Method

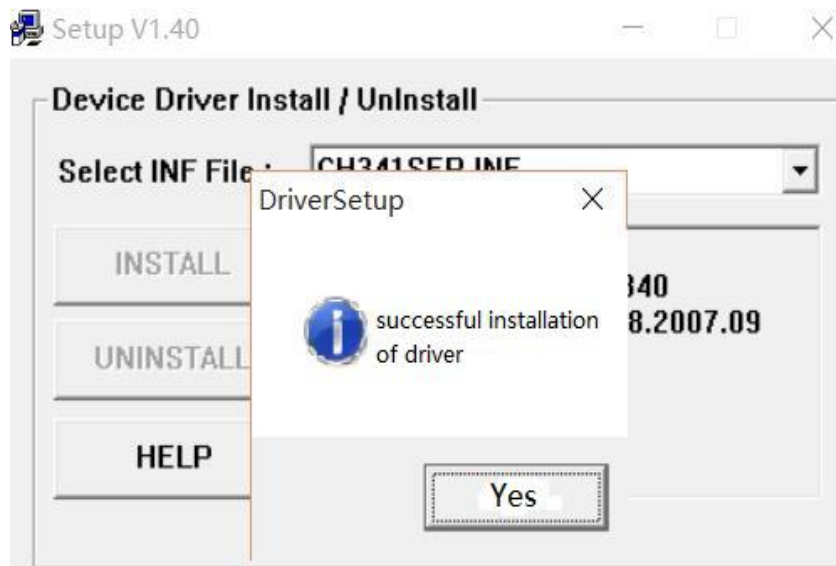
### 3.1 Install driver

First, the module is connected via USB-TTL module to the computer, open the package of CH340 and install the module driver. Open CH341SER.exe, click INSTALL and then it will output a COM.

CH340 drive:

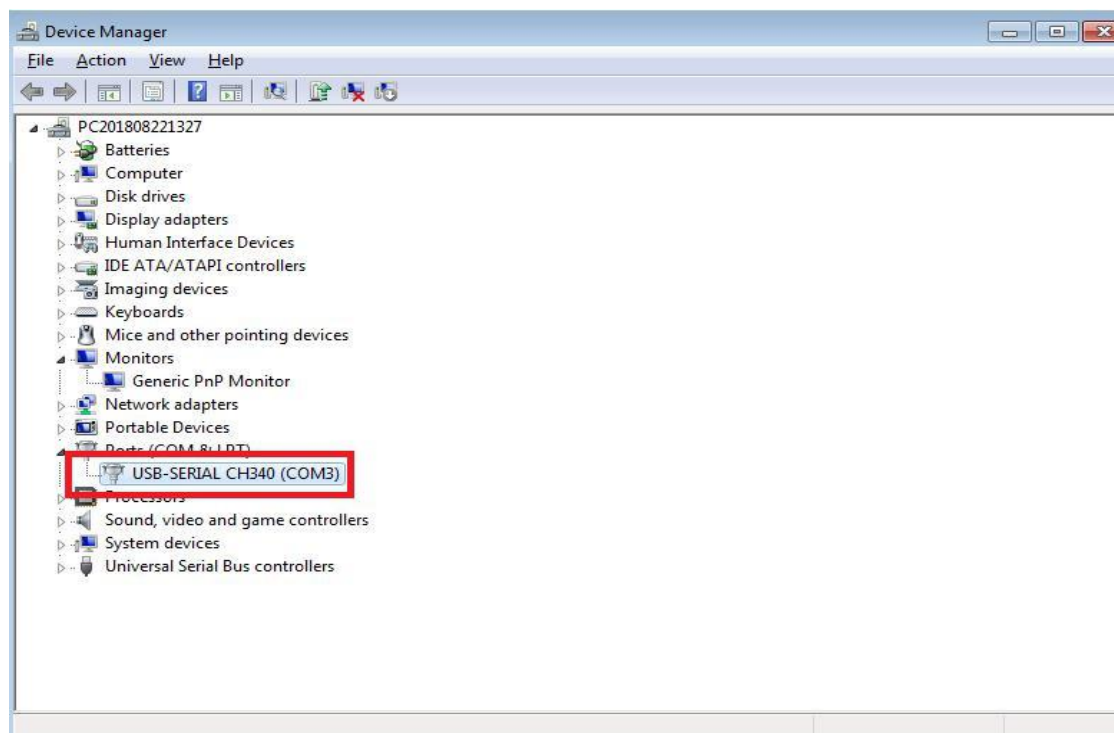
[https://wiki.wit-motion.com/english/doku.php?id=communication\\_module](https://wiki.wit-motion.com/english/doku.php?id=communication_module)





## 3.2 Check port number

Right click my computer\management\Device manager\Port (COM&LPT) . You can see the generated port number, the port number is COM3.

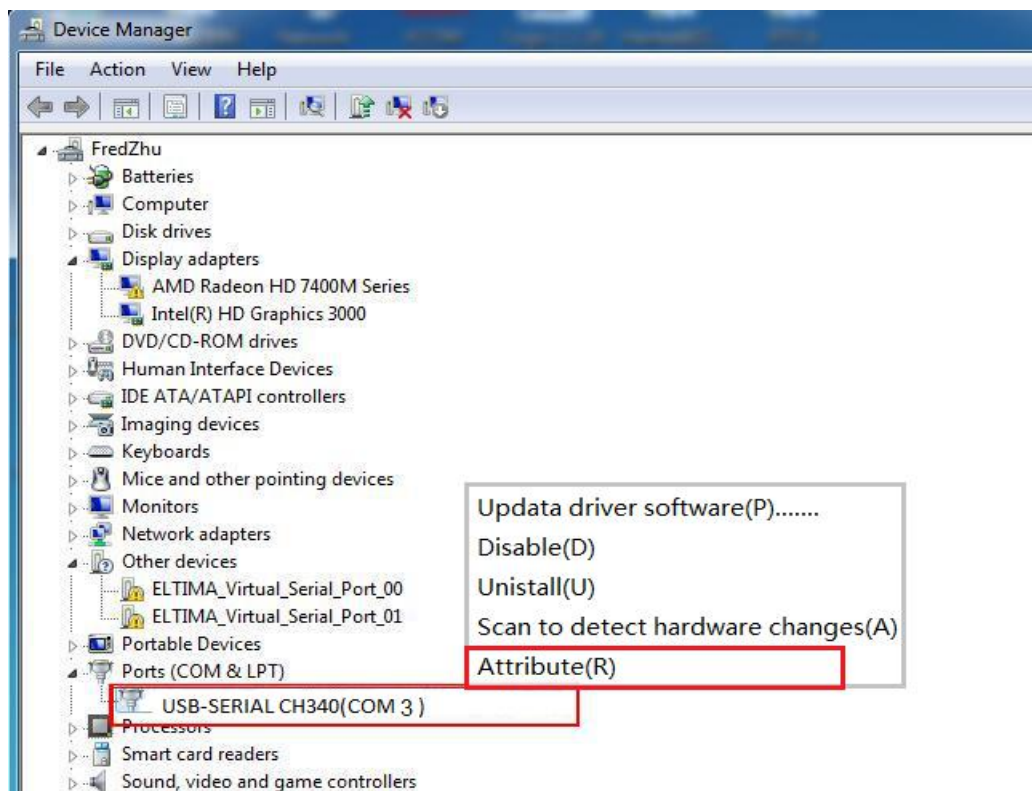


### Change port number

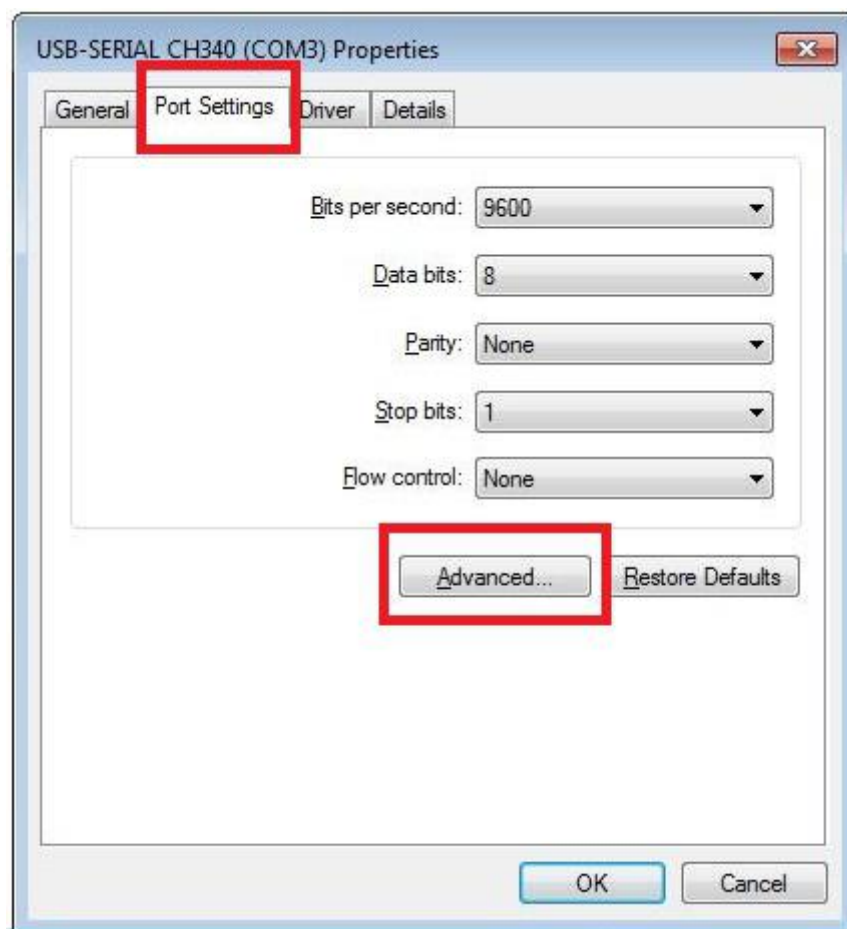
Sometimes we will insert multiple USB serial ports into the computer. Sometimes we want the serial port number to be assigned in the way we expected, so we need to manually adjust the serial port number. For example, change the serial port 16 above to a serial port.

The steps are as follows:

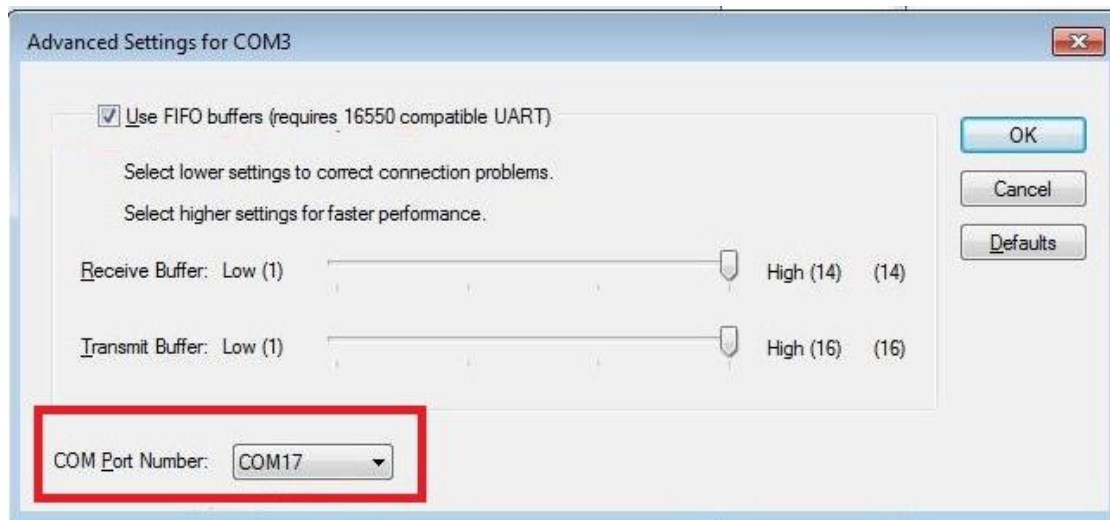
Open the device manager, right click on the USB-SERIAL CH340 and select Attribute.



Click on Port Settings, then click on "Advanced Settings".



Change the COM port and click OK.



## 4 Function test

Connect the TX and RX of the module with the DuPont line. Dial the corresponding DIP switch according to the instructions in the function selection, then insert the module into the computer and use the serial port debugging assistant to send data to see if there is corresponding data to return. If you can receive the data sent, the module is functional.





深圳维特智能科技有限公司

WitMotion ShenZhen Co., Ltd

## USB-TTL Serial converter

TEL : (+86) 755-33185882  
E-mail : [wit@wit-motion.com](mailto:wit@wit-motion.com)  
Website : [www.wit-motion.com](http://www.wit-motion.com)  
Aliexpress : <https://witmotion.aliexpress.com>  
Alibaba : <https://witmotion.en.alibaba.com>  
Wit-wiki : <https://wiki.wit-motion.com/english>  
Address : Honghai building 1306 Songgang town Baoan District Shenzhen  
Guangdong Province China